

HAKO
SOLDERING FLUX

FS-210

New

Brush-tip Type Flux Pen



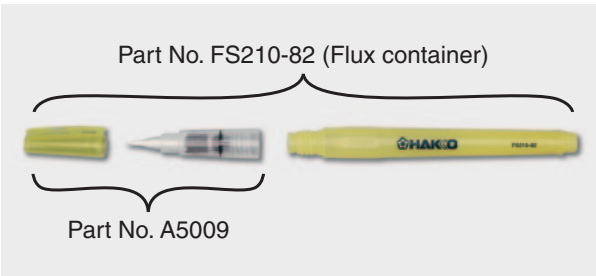
Packing List

FS210-82	Flux container for 4 mL (5 pcs)
----------	---------------------------------

* No Flux contained.

Replacement Parts

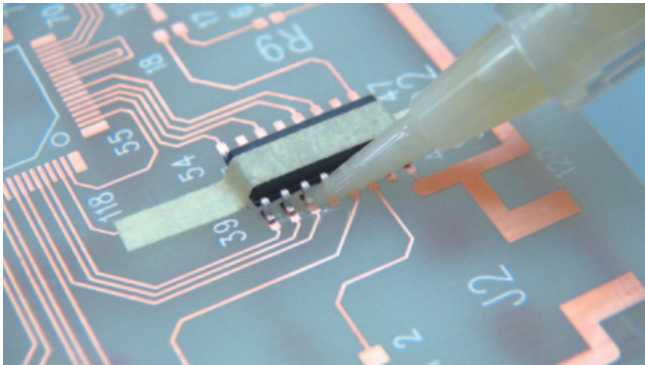
A5009	Brush-tip with a cap (5 pcs)
-------	------------------------------



- Pen tip does not split easily.
- You can fill your favorite flux into FS-210.
- Simply push the pen shaft when you need some extra flux.

Features

Pen for pinpoint application of optimum amount of flux



Simply push the shaft for a generous coating of flux

